



MixWork **EDM67**

Durable drive tire with long life span and great traction for mixed road conditions.

EVERGREEN
drive to the future

MixWork EDM67



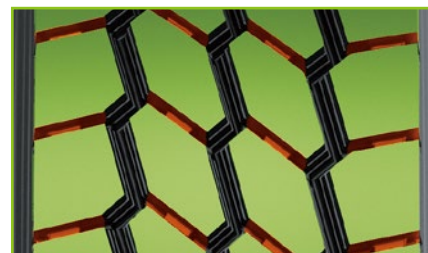
SIZE	PR	LI/SS	STANDARD RIM	MAX LOAD		MAX. PREASURE (psi)	TREAD DEPTH (32nds)	TREAD WIDTH (in)	OVERALL DIAMETER (in)
				SINGLE (lbs)	DUAL (lbs)				
11R22.5	16	146/143L	8.25	6610	6005	120	29	9	41
11R24.5	16	149/146L	8.25	7160	6610	120	29	9	43



Half-open shoulder tread design with improved cap base formula for exceptional mileage and traction.



Innovational pattern with multi-step lugs design makes sure excellent traction and anti-wear performance.



Regular pressure distribution ensures higher mileage potential.