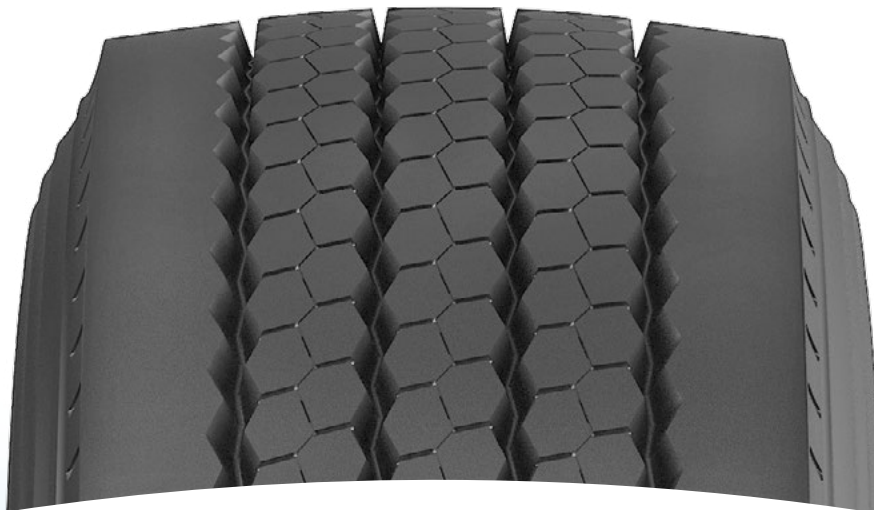
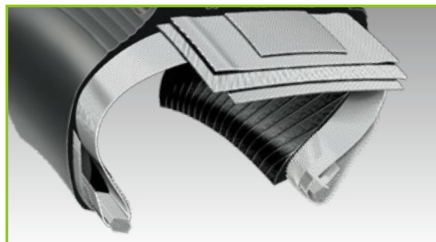


MultiRoute ETR31

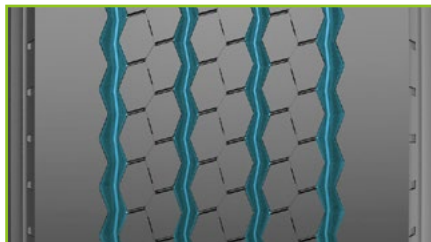


TECHNICAL FEATURES

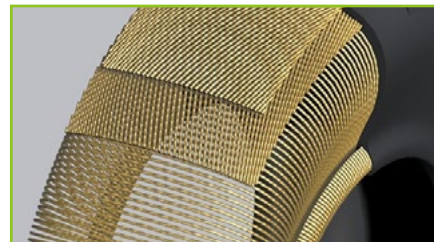
Optimized wide tread and four-belt design improves longevity and enhances retreadability.



Increased tread depth and rectangle footprint promote even wear and mileage potential.







High conductive cord accelerates heat transition which helps lower rolling resistance and increases fuel efficiency.



SIZE RANGE



Size	PR	LI/SS	Tread Depth (mm)	M+S				
385/65R22.5	24PR	164K	17.5	√	√	C	C	72dB B