

# MultiRoute **EAR30**

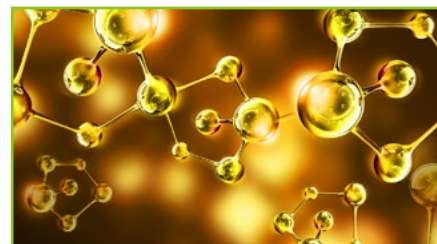
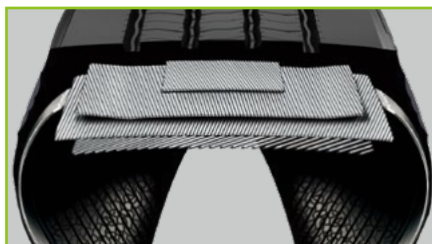


## TECHNICAL FEATURES

The optimized pattern design improves both dry and wet handling in changing regional traffic conditions.





The high, rigid belt structure enhances driving stability.

The enhanced tread formula ensures long tread life and excellent cut or chip resistance.



## SIZE RANGE



Size	PR	LI/SS	Tread Depth (mm)	M+S						
205/75R17.5	14PR	124/122M	13	√	√	C	C	73dB	B	
215/75R17.5	16PR	135/133L	12.5	√	√	C	C	73dB	B	
235/75R17.5	16PR	132/130M	13	√	√	C	C	73dB	B	
235/75R17.5	18PR	143/141L	13	√	√	C	C	73dB	B	
245/70R19.5	18PR	144/142J	13	√	√	C	C	73dB	B	
265/70R19.5	18PR	143/141J	13.5	√	√	C	C	73dB	B	
285/70R19.5	18PR	150/148K	14	√	√	C	C	73dB	B	