

# MixWork EDM60

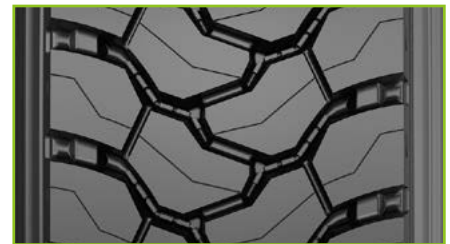
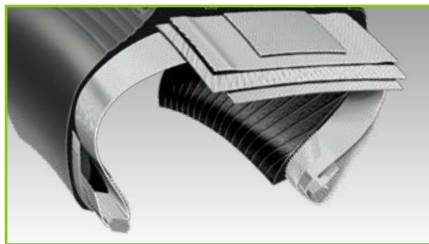


## TECHNICAL FEATURES

Exceptional resistance to damage by compounds with advanced resistance for tread to cuts and tears.





Durable casing design for maximum service life in demanding mixed work use.

Latest pattern designed for maximized traction in harshest terrain.



## SIZE RANGE



Size	PR	LI/SS	Tread Depth (mm)	M+S				
13R22.5	20PR	156/150K	20.5	√	√	E	C	77dB C
315/80R22.5	20PR	156/153K	21	√	√	E	C	77dB C